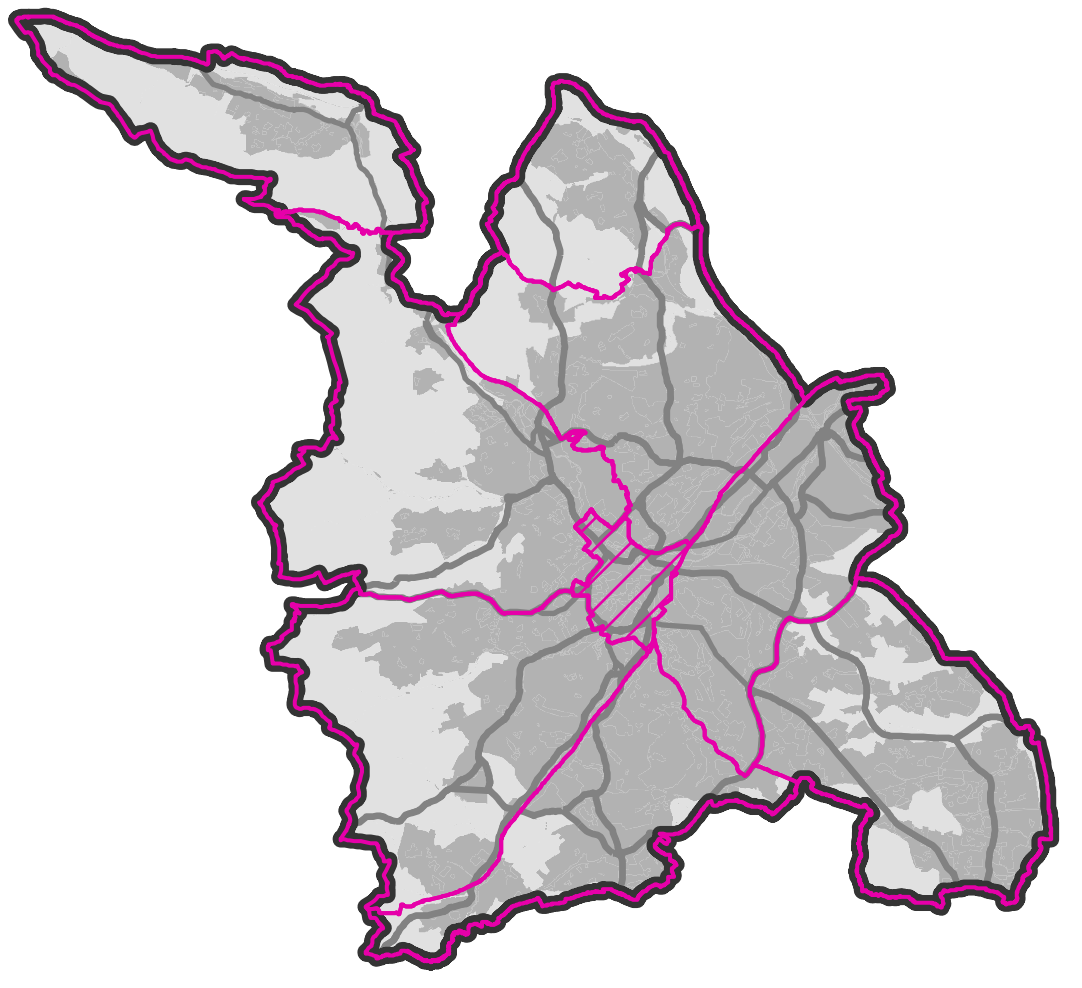


# The Sheffield Plan

Publication (Pre-Submission) Draft  
Changes post Public Consultation

Policies Map  
July 2023

Central Sub Area



### Site Allocations

- Strategic Housing Site
- Housing Site
- Strategic Employment Site
- Employment Site
- Strategic Mixed Use Site
- Mixed Use Site
- Strategic Leisure and Recreation Site
- Open Space Site

### Routes

- Strategic Road Network
- Strategic Route for Heavy Goods Vehicles
- Strategic Road
- Safeguarded Route for the Innovation Corridor
- Cycle route (existing)
- Connecting Sheffield
- Mass Transit Corridor
- Gateway Route
- Supertram stop
- Supertram route

### Policy Zones

- City Centre Office Zone
- General Employment Zone
- Industrial Zone
- Residential Zone
- City Centre Primary Shopping Area
- District Centre
- Local Centre
- Central Area Flexible Use Zone
- Flexible Use Zone (Outside the Central Area)
- Cultural Zone
- University/College Zone
- Hospital Zone
- Urban Green Space Zone
- Green Belt

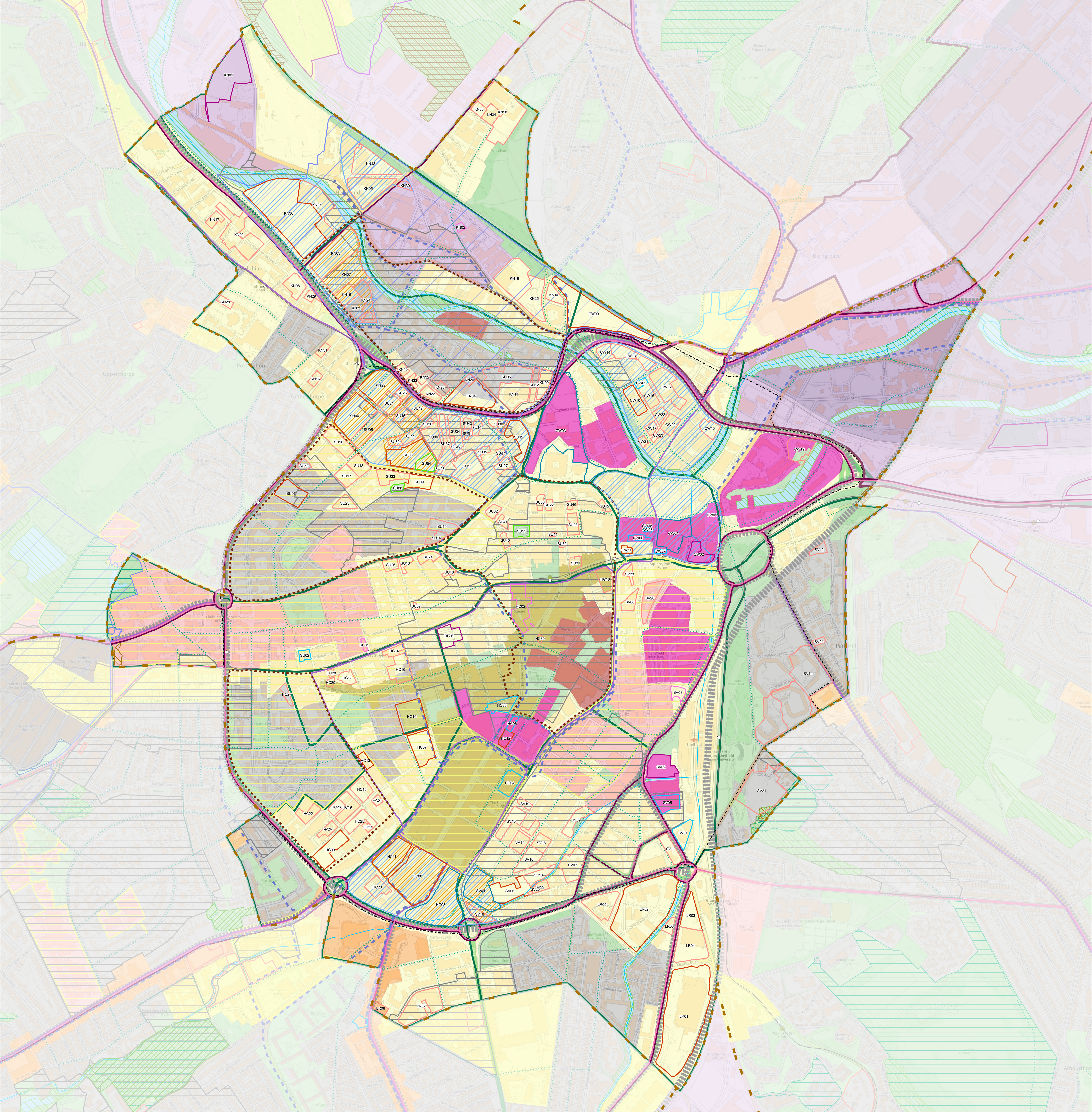
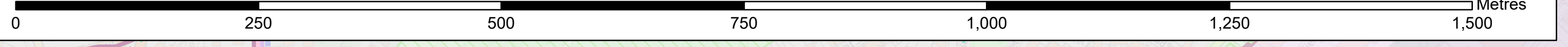
### Boundaries

- Central Area Neighbourhood
- City Centre
- Sub Area
- Designated Neighbourhood Plan Area
- Peak District National Park
- Sheffield Local Planning Authority

### Other designations

- Larger Wind Turbine Location
- Catalyst Site
- Priority Location
- Innovation District
- Olympic Legacy Park
- Biological Site of Special Scientific Interest
- Geological Site of Special Scientific Interest
- Local Nature Reserve
- Local Wildlife Site
- Local Geological Site
- Local Green Space
- Scheduled Monument
- Conservation Area
- Historic Park, Garden or Cemetery
- Green Belt Village or Substantially Developed Road Frontage
- Addition to the Green Belt
- Removal from the Green Belt
- Night-time Quiet Area
- Area suitable for Purpose Built Student Accommodation
- Safeguarded for Flood Storage
- Main river
- Waterway

© Crown copyright and database rights 2023 OS licence number 100018816. You are permitted to use this data solely to enable you to respond to, or interact with, the organisation that provided you with the data. You are not permitted to copy, sub-licence, distribute or sell any of this data to third parties in any form.



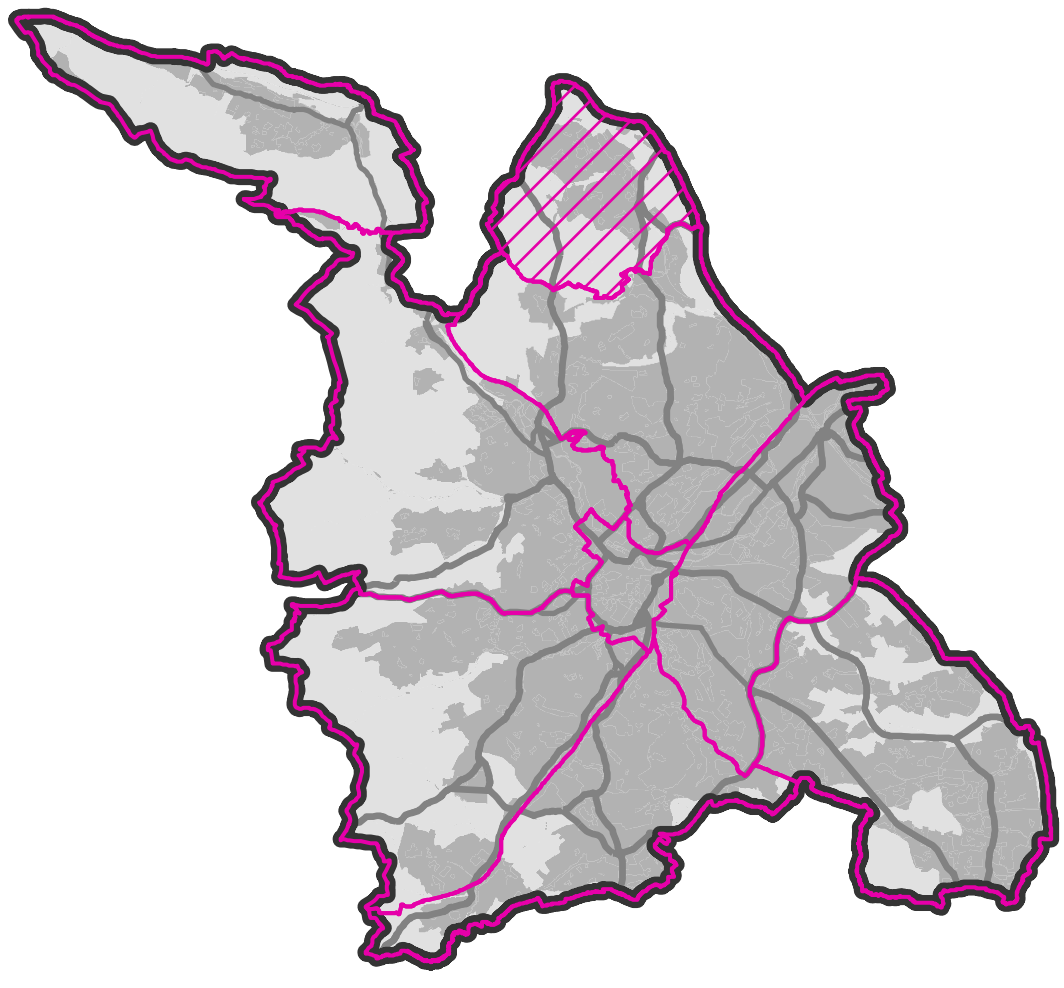
This page is intentionally left blank

# The Sheffield Plan

Publication (Pre-Submission) Draft  
Changes post Public Consultation

Policies Map  
July 2023

Chapelton/High Green Sub Area



## Site Allocations

- Strategic Housing Site
- Housing Site
- Strategic Employment Site
- Employment Site
- Strategic Mixed Use Site
- Mixed Use Site
- Strategic Leisure and Recreation Site
- Open Space Site

## Routes

- Strategic Road Network
- Strategic Route for Heavy Goods Vehicles
- Strategic Road
- Safeguarded Route for the Innovation Corridor
- Cycle route (existing)
- Connecting Sheffield
- Mass Transit Corridor
- Gateway Route
- Supertram stop
- Supertram route

## Policy Zones

- City Centre Office Zone
- General Employment Zone
- Industrial Zone
- Residential Zone
- City Centre Primary Shopping Area
- District Centre
- Local Centre
- Central Area Flexible Use Zone
- Flexible Use Zone (Outside the Central Area)
- Cultural Zone
- University/College Zone
- Hospital Zone
- Urban Green Space Zone
- Green Belt

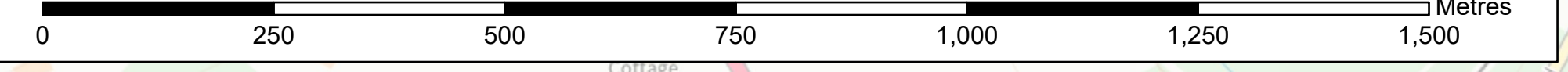
## Boundaries

- Central Area Neighbourhood
- City Centre
- Sub Area
- Designated Neighbourhood Plan Area
- Peak District National Park
- Sheffield Local Planning Authority

## Other designations

- Larger Wind Turbine Location
- Catalyst Site
- Priority Location
- Innovation District
- Olympic Legacy Park
- Biological Site of Special Scientific Interest
- Geological Site of Special Scientific Interest
- Local Nature Reserve
- Local Wildlife Site
- Local Geological Site
- Local Green Space
- Scheduled Monument
- Conservation Area
- Historic Park, Garden or Cemetery
- Green Belt Village or Substantially Developed Road Frontage
- Addition to the Green Belt
- Removal from the Green Belt
- Night-time Quiet Area
- Area suitable for Purpose Built Student Accommodation
- Safeguarded for Flood Storage
- Main river
- Waterway

© Crown copyright and database rights 2023 OS licence number 100018816. You are permitted to use this data solely to enable you to respond to, or interact with, the organisation that provided you with the data. You are not permitted to copy, sub-licence, distribute or sell any of this data to third parties in any form.



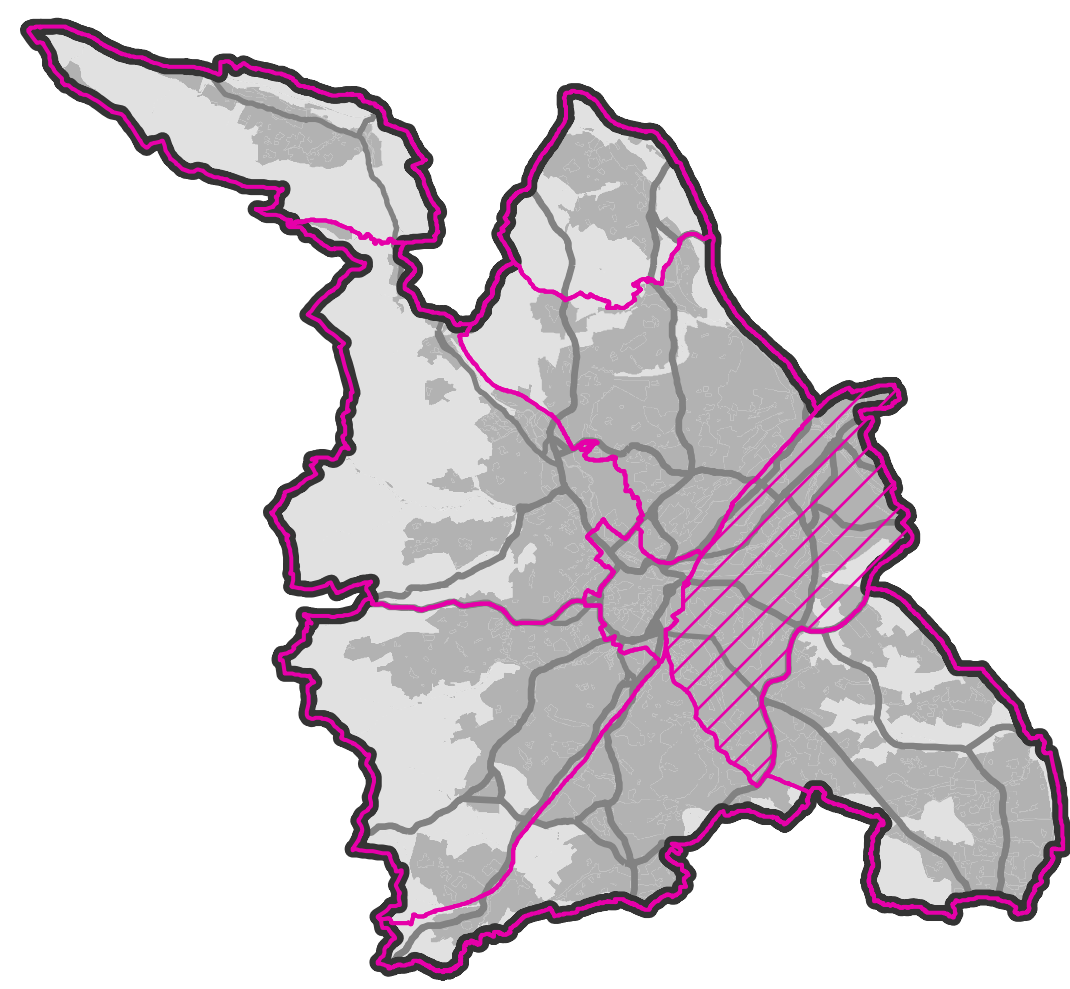
This page is intentionally left blank

# The Sheffield Plan

Publication (Pre-Submission) Draft  
Changes post Public Consultation

Policies Map  
July 2023

East Sheffield Sub Area



## Site Allocations

- Strategic Housing Site
- Housing Site
- Strategic Employment Site
- Employment Site
- Strategic Mixed Use Site
- Mixed Use Site
- Strategic Leisure and Recreation Site
- Open Space Site

## Routes

- Strategic Road Network
- Strategic Route for Heavy Goods Vehicles
- Strategic Road
- Safeguarded Route for the Innovation Corridor
- Cycle route (existing)
- Connecting Sheffield
- Mass Transit Corridor
- Gateway Route
- Supertram stop
- Supertram route

## Policy Zones

- City Centre Office Zone
- General Employment Zone
- Industrial Zone
- Residential Zone
- City Centre Primary Shopping Area
- District Centre
- Local Centre
- Central Area Flexible Use Zone
- Flexible Use Zone (Outside the Central Area)
- Cultural Zone
- University/College Zone
- Hospital Zone
- Urban Green Space Zone
- Green Belt

## Boundaries

- Central Area Neighbourhood
- City Centre
- Sub Area
- Designated Neighbourhood Plan Area
- Peak District National Park
- Sheffield Local Planning Authority

## Other designations

- Larger Wind Turbine Location
- Catalyst Site
- Priority Location
- Innovation District
- Olympic Legacy Park
- Biological Site of Special Scientific Interest
- Geological Site of Special Scientific Interest
- Local Nature Reserve
- Local Wildlife Site
- Local Geological Site
- Local Green Space
- Scheduled Monument
- Conservation Area
- Historic Park, Garden or Cemetery
- Green Belt Village or Substantially Developed Road Frontage
- Addition to the Green Belt
- Removal from the Green Belt
- Night-time Quiet Area
- Area suitable for Purpose Built Student Accommodation
- Safeguarded for Flood Storage
- Main river
- Waterway

© Crown copyright and database rights 2023 OS licence number 100018816. You are permitted to use this data solely to enable you to respond to, or interact with, the organisation that provided you with the data. You are not permitted to copy, sub-licence, distribute or sell any of this data to third parties in any form.

0 250 500 750 1,000 1,250 1,500 Metres



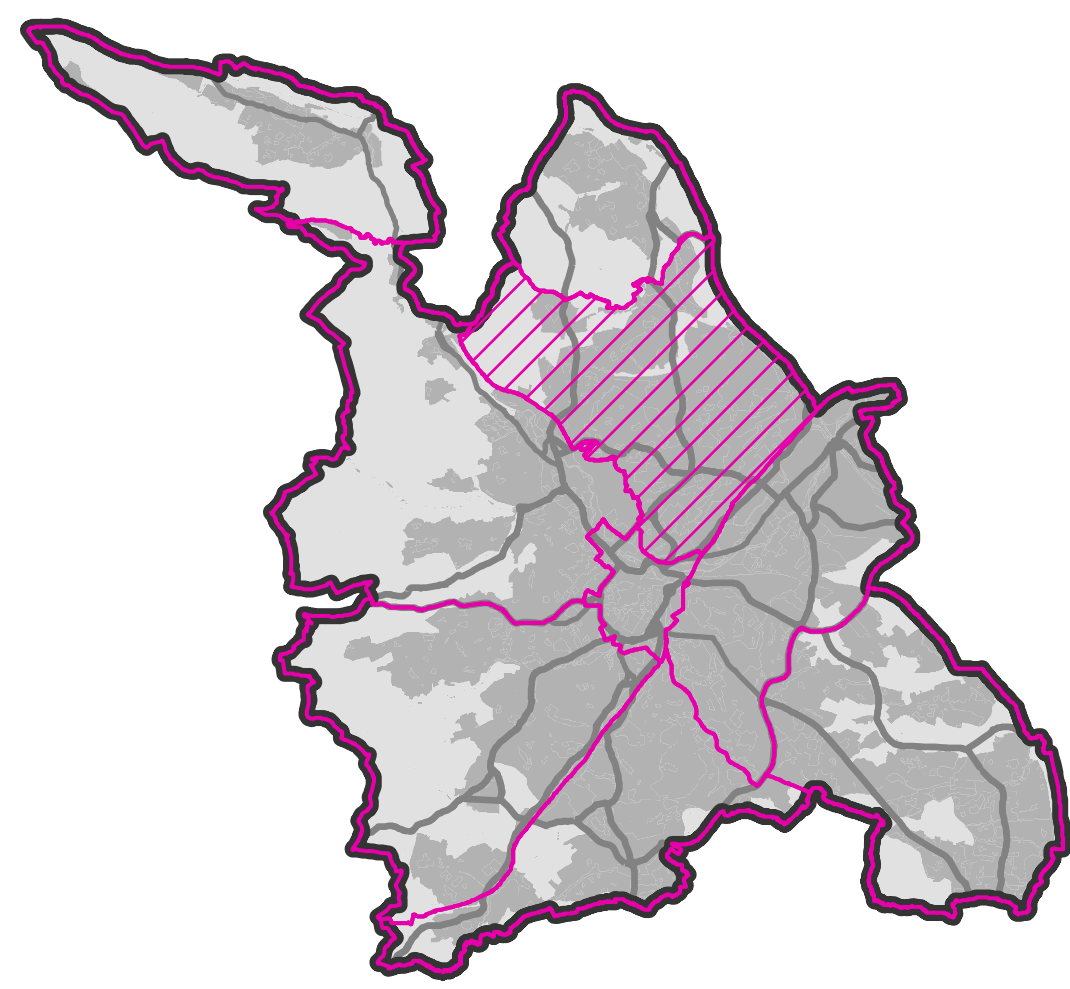
This page is intentionally left blank

# The Sheffield Plan

Publication (Pre-Submission) Draft  
Changes post Public Consultation

Policies Map  
July 2023

North East Sheffield Sub Area



## Site Allocations

- Strategic Housing Site
- Housing Site
- Strategic Employment Site
- Employment Site
- Strategic Mixed Use Site
- Mixed Use Site
- Strategic Leisure and Recreation Site
- Open Space Site

## Routes

- Strategic Road Network
- Strategic Route for Heavy Goods Vehicles
- Strategic Road
- Safeguarded Route for the Innovation Corridor
- Cycle route (existing)
- Connecting Sheffield
- Mass Transit Corridor
- Gateway Route
- Supertram stop
- Supertram route

## Policy Zones

- City Centre Office Zone
- General Employment Zone
- Industrial Zone
- Residential Zone
- City Centre Primary Shopping Area
- District Centre
- Local Centre
- Central Area Flexible Use Zone
- Flexible Use Zone (Outside the Central Area)
- Cultural Zone
- University/College Zone
- Hospital Zone
- Urban Green Space Zone
- Green Belt

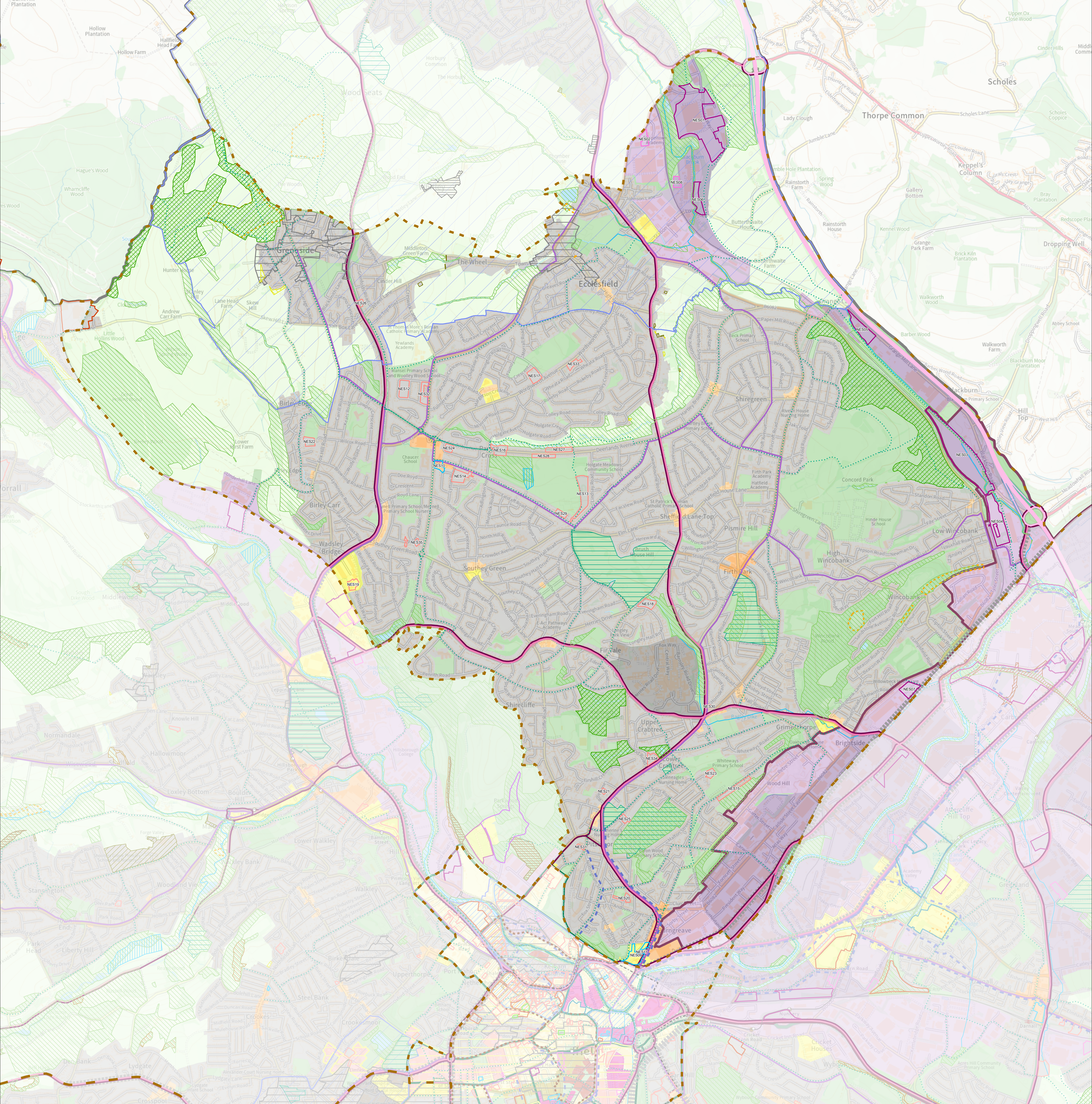
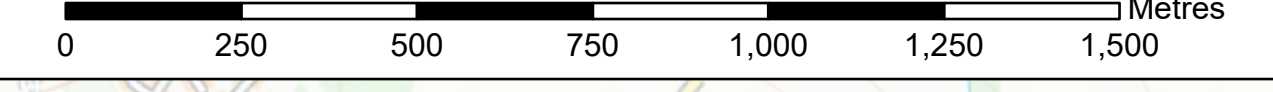
## Boundaries

- Central Area Neighbourhood
- City Centre
- Sub Area
- Designated Neighbourhood Plan Area
- Peak District National Park
- Sheffield Local Planning Authority

## Other designations

- Larger Wind Turbine Location
- Catalyst Site
- Priority Location
- Innovation District
- Olympic Legacy Park
- Biological Site of Special Scientific Interest
- Geological Site of Special Scientific Interest
- Local Nature Reserve
- Local Wildlife Site
- Local Geological Site
- Local Green Space
- Scheduled Monument
- Conservation Area
- Historic Park, Garden or Cemetery
- Green Belt Village or Substantially Developed Road Frontage
- Addition to the Green Belt
- Removal from the Green Belt
- Night-time Quiet Area
- Area suitable for Purpose Built Student Accommodation
- Safeguarded for Flood Storage
- Main river
- Waterway

© Crown copyright and database rights 2023 OS licence number 100018816. You are permitted to use this data solely to enable you to respond to, or interact with, the organisation that provided you with the data. You are not permitted to copy, sub-licence, distribute or sell any of this data to third parties in any form.



This page is intentionally left blank

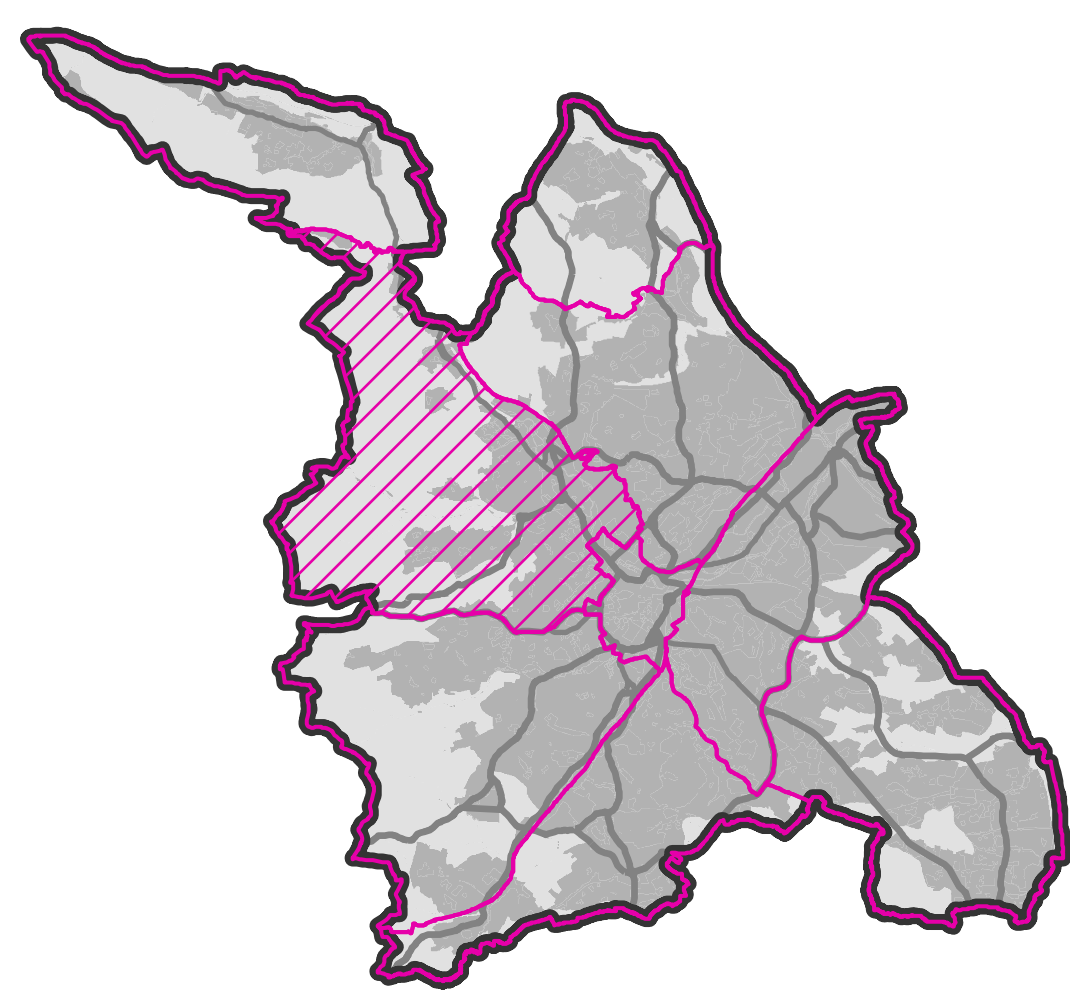


# The Sheffield Plan

Publication (Pre-Submission) Draft  
Changes post Public Consultation

Policies Map  
July 2023

North West Sheffield Sub Area



## Site Allocations

- Strategic Housing Site
- Housing Site
- Strategic Employment Site
- Employment Site
- Strategic Mixed Use Site
- Mixed Use Site
- Strategic Leisure and Recreation Site
- Open Space Site

## Routes

- Strategic Road Network
- Strategic Route for Heavy Goods Vehicles
- Strategic Road
- Safeguarded Route for the Innovation Corridor
- Cycle route (existing)
- Connecting Sheffield
- Mass Transit Corridor
- Gateway Route
- Supertram stop
- Supertram route

## Policy Zones

- City Centre Office Zone
- General Employment Zone
- Industrial Zone
- Residential Zone
- City Centre Primary Shopping Area
- District Centre
- Local Centre
- Central Area Flexible Use Zone
- Flexible Use Zone (Outside the Central Area)
- Cultural Zone
- University/College Zone
- Hospital Zone
- Urban Green Space Zone
- Green Belt

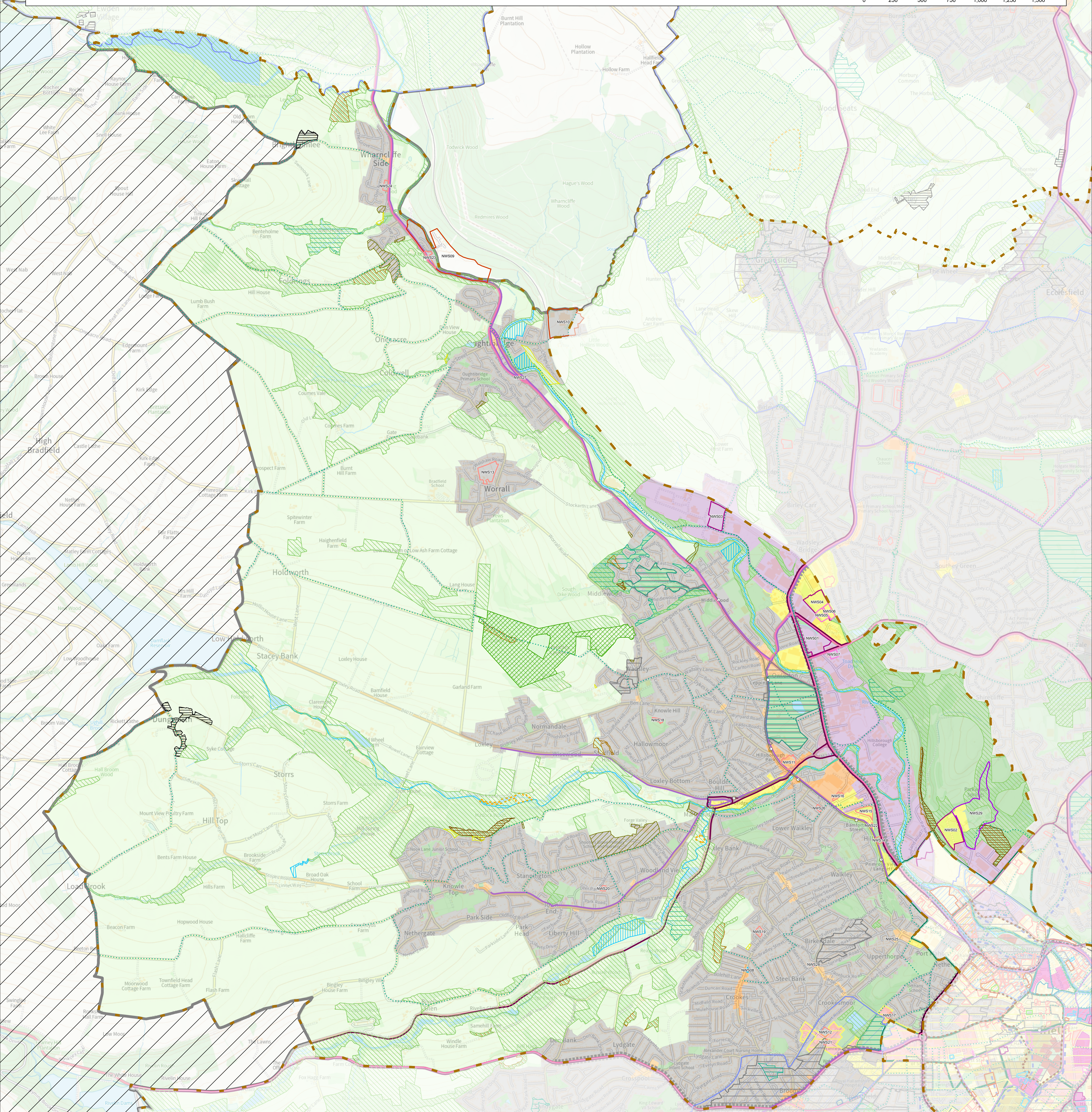
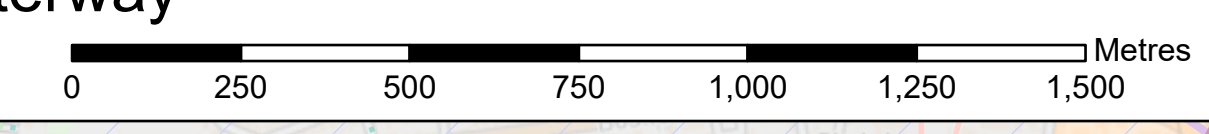
## Boundaries

- Central Area Neighbourhood
- City Centre
- Sub Area
- Designated Neighbourhood Plan Area
- Peak District National Park
- Sheffield Local Planning Authority

## Other designations

- + Larger Wind Turbine Location
- Catalyst Site
- Priority Location
- Innovation District
- Olympic Legacy Park
- Biological Site of Special Scientific Interest
- Geological Site of Special Scientific Interest
- Local Nature Reserve
- Local Wildlife Site
- Local Geological Site
- Local Green Space
- Scheduled Monument
- Conservation Area
- Historic Park, Garden or Cemetery
- Green Belt Village or Substantially Developed Road Frontage
- Addition to the Green Belt
- Removal from the Green Belt
- Night-time Quiet Area
- Area suitable for Purpose Built Student Accommodation
- Safeguarded for Flood Storage
- Main river
- Waterway

© Crown copyright and database rights 2023 OS licence number 100018816. You are permitted to use this data solely to enable you to respond to, or interact with, the organisation that provided you with the data. You are not permitted to copy, sub-licence, distribute or sell any of this data to third parties in any form.



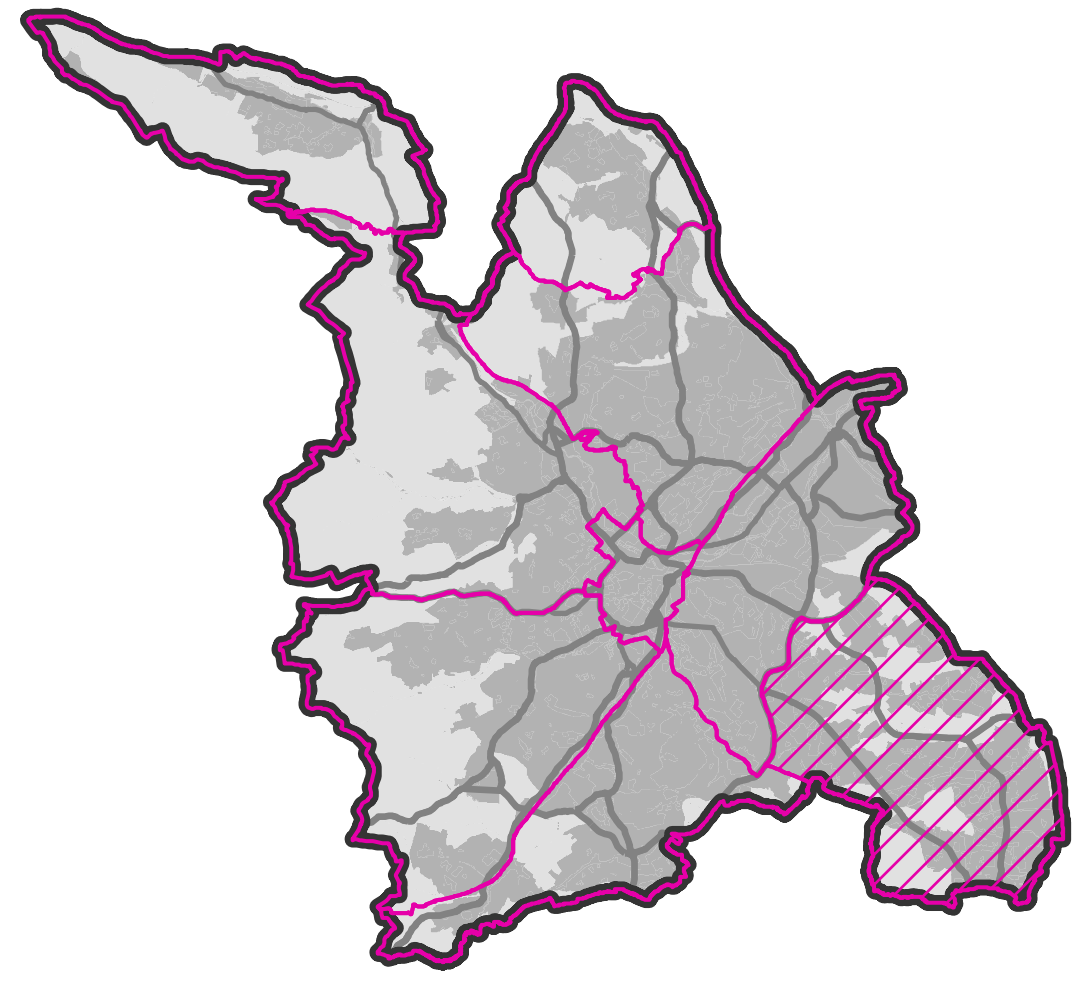
This page is intentionally left blank

# The Sheffield Plan

Publication (Pre-Submission) Draft  
Changes post Public Consultation

Policies Map  
July 2023

South East Sheffield Sub Area



## Site Allocations

- Strategic Housing Site
- Housing Site
- Strategic Employment Site
- Employment Site
- Strategic Mixed Use Site
- Mixed Use Site
- Strategic Leisure and Recreation Site
- Open Space Site

## Routes

- Strategic Road Network
- Strategic Route for Heavy Goods Vehicles
- Strategic Road
- Safeguarded Route for the Innovation Corridor
- Cycle route (existing)
- Connecting Sheffield
- Mass Transit Corridor
- Gateway Route
- Supertram stop
- Supertram route

## Policy Zones

- City Centre Office Zone
- General Employment Zone
- Industrial Zone
- Residential Zone
- City Centre Primary Shopping Area
- District Centre
- Local Centre
- Central Area Flexible Use Zone
- Flexible Use Zone (Outside the Central Area)
- Cultural Zone
- University/College Zone
- Hospital Zone
- Urban Green Space Zone
- Green Belt

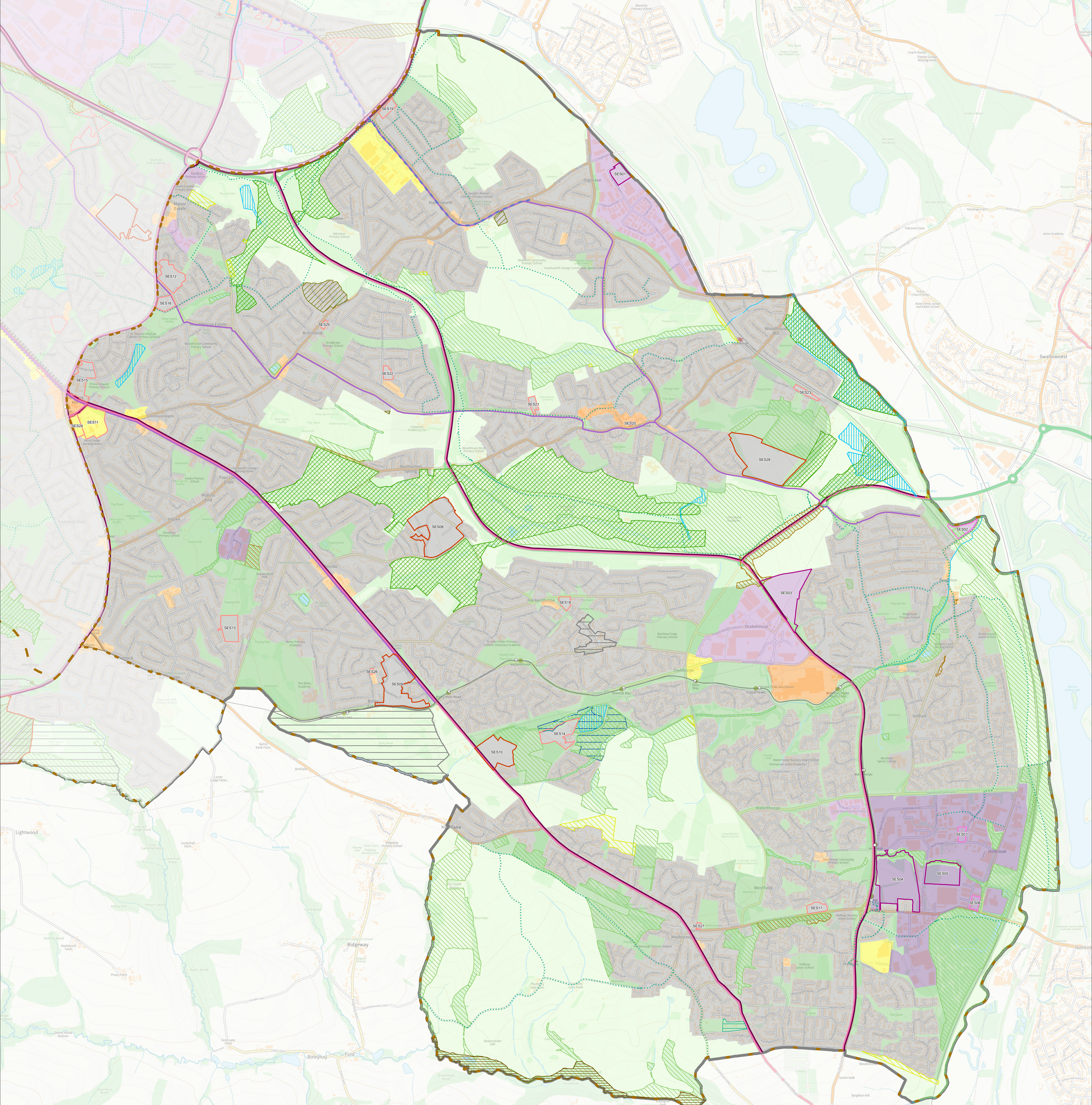
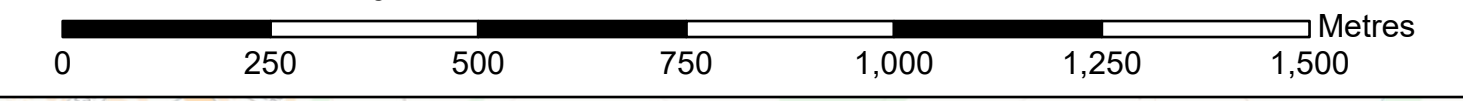
## Boundaries

- Central Area Neighbourhood
- City Centre
- Sub Area
- Designated Neighbourhood Plan Area
- Peak District National Park
- Sheffield Local Planning Authority

## Other designations

- Larger Wind Turbine Location
- Catalyst Site
- Priority Location
- Innovation District
- Olympic Legacy Park
- Biological Site of Special Scientific Interest
- Geological Site of Special Scientific Interest
- Local Nature Reserve
- Local Wildlife Site
- Local Geological Site
- Local Green Space
- Scheduled Monument
- Conservation Area
- Historic Park, Garden or Cemetery
- Green Belt Village or Substantially Developed Road Frontage
- Addition to the Green Belt
- Removal from the Green Belt
- Night-time Quiet Area
- Area suitable for Purpose Built Student Accommodation
- Safeguarded for Flood Storage
- Main river
- Waterway

© Crown copyright and database rights 2023 OS licence number 100018816. You are permitted to use this data solely to enable you to respond to, or interact with, the organisation that provided you with the data. You are not permitted to copy, sub-licence, distribute or sell any of this data to third parties in any form.



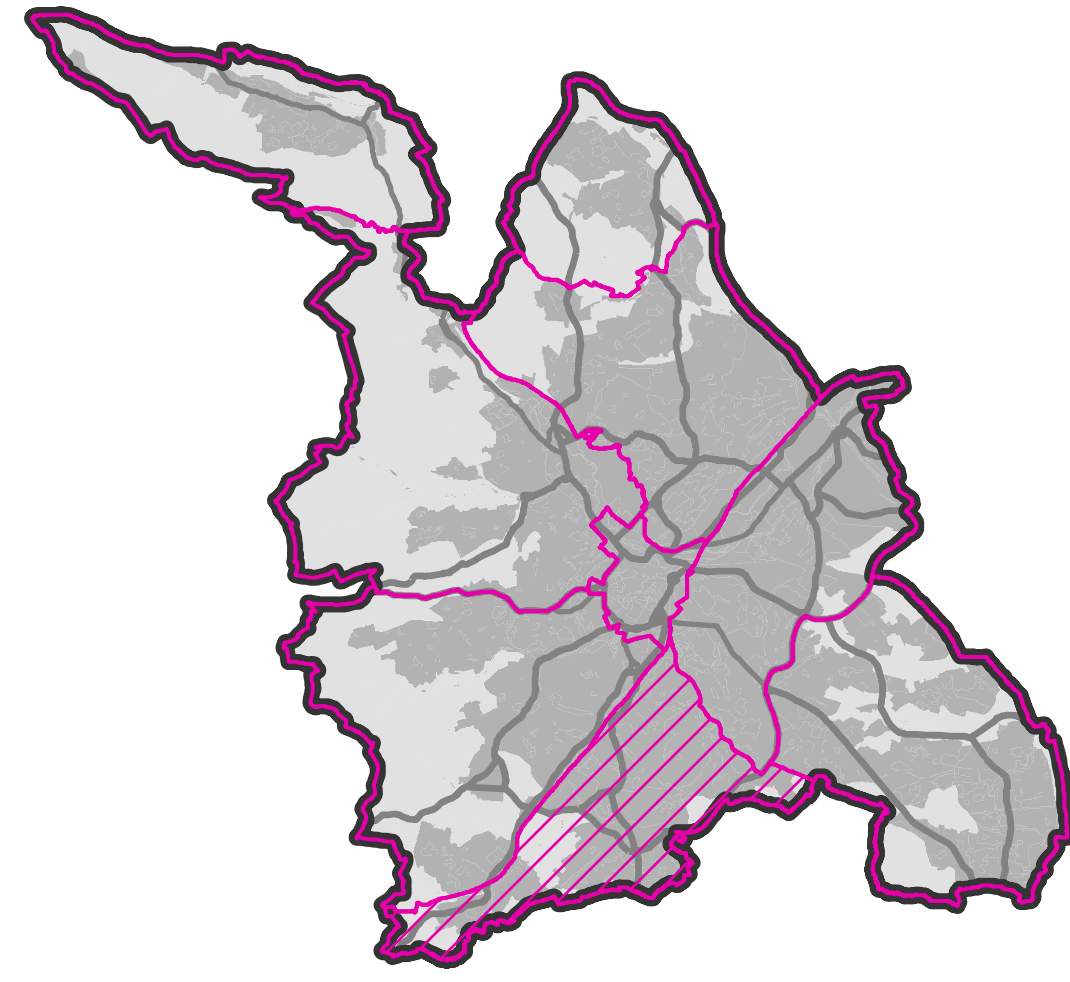
This page is intentionally left blank

# Sheffield Plan

Publication (Pre-Submission) Draft  
Changes post Public Consultation

Policies Map  
July 2023

South Sheffield Sub Area



## Site Allocations

- Strategic Housing Site
- Housing Site
- Strategic Employment Site
- Employment Site
- Strategic Mixed Use Site
- Mixed Use Site
- Strategic Leisure and Recreation Site
- Open Space Site

## Routes

- Strategic Road Network
- Strategic Route for Heavy Goods Vehicles
- Strategic Road
- Safeguarded Route for the Innovation Corridor
- Cycle route (existing)
- Connecting Sheffield
- Mass Transit Corridor
- Gateway Route
- Supertram stop
- Supertram route

## Policy Zones

- City Centre Office Zone
- General Employment Zone
- Industrial Zone
- Residential Zone
- City Centre Primary Shopping Area
- District Centre
- Local Centre
- Central Area Flexible Use Zone
- Flexible Use Zone (Outside the Central Area)
- Cultural Zone
- University/College Zone
- Hospital Zone
- Urban Green Space Zone
- Green Belt

## Boundaries

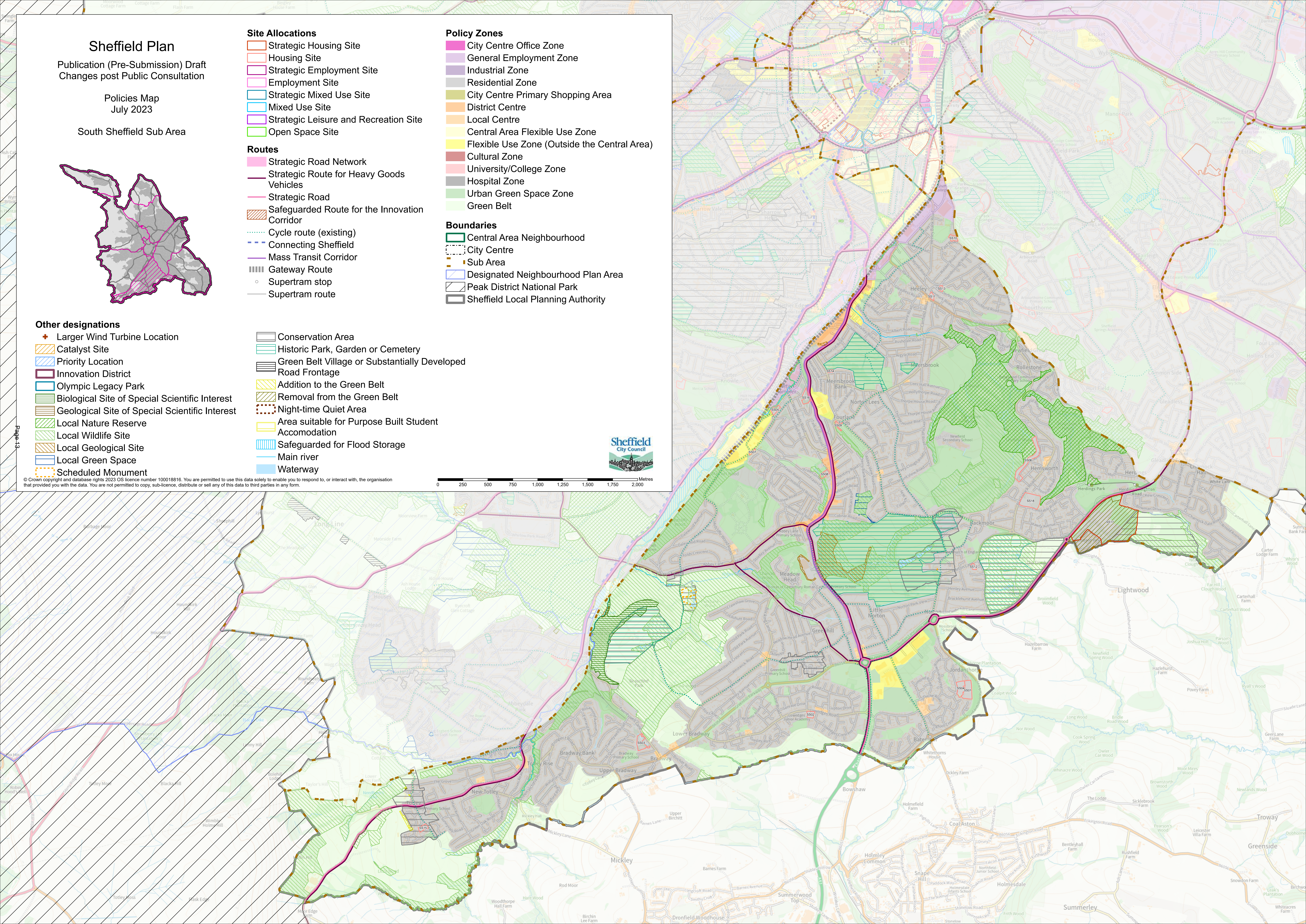
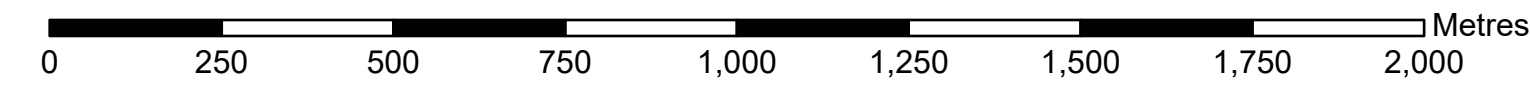
- Central Area Neighbourhood
- City Centre
- Sub Area
- Designated Neighbourhood Plan Area
- Peak District National Park
- Sheffield Local Planning Authority

## Other designations

- Larger Wind Turbine Location
- Catalyst Site
- Priority Location
- Innovation District
- Olympic Legacy Park
- Biological Site of Special Scientific Interest
- Geological Site of Special Scientific Interest
- Local Nature Reserve
- Local Wildlife Site
- Local Geological Site
- Local Green Space
- Scheduled Monument

- Conservation Area
- Historic Park, Garden or Cemetery
- Green Belt Village or Substantially Developed Road Frontage
- Addition to the Green Belt
- Removal from the Green Belt
- Night-time Quiet Area
- Area suitable for Purpose Built Student Accommodation
- Safeguarded for Flood Storage
- Main river
- Waterway

© Crown copyright and database rights 2023 OS licence number 100018816. You are permitted to use this data solely to enable you to respond to, or interact with, the organisation that provided you with the data. You are not permitted to copy, sub-licence, distribute or sell any of this data to third parties in any form.



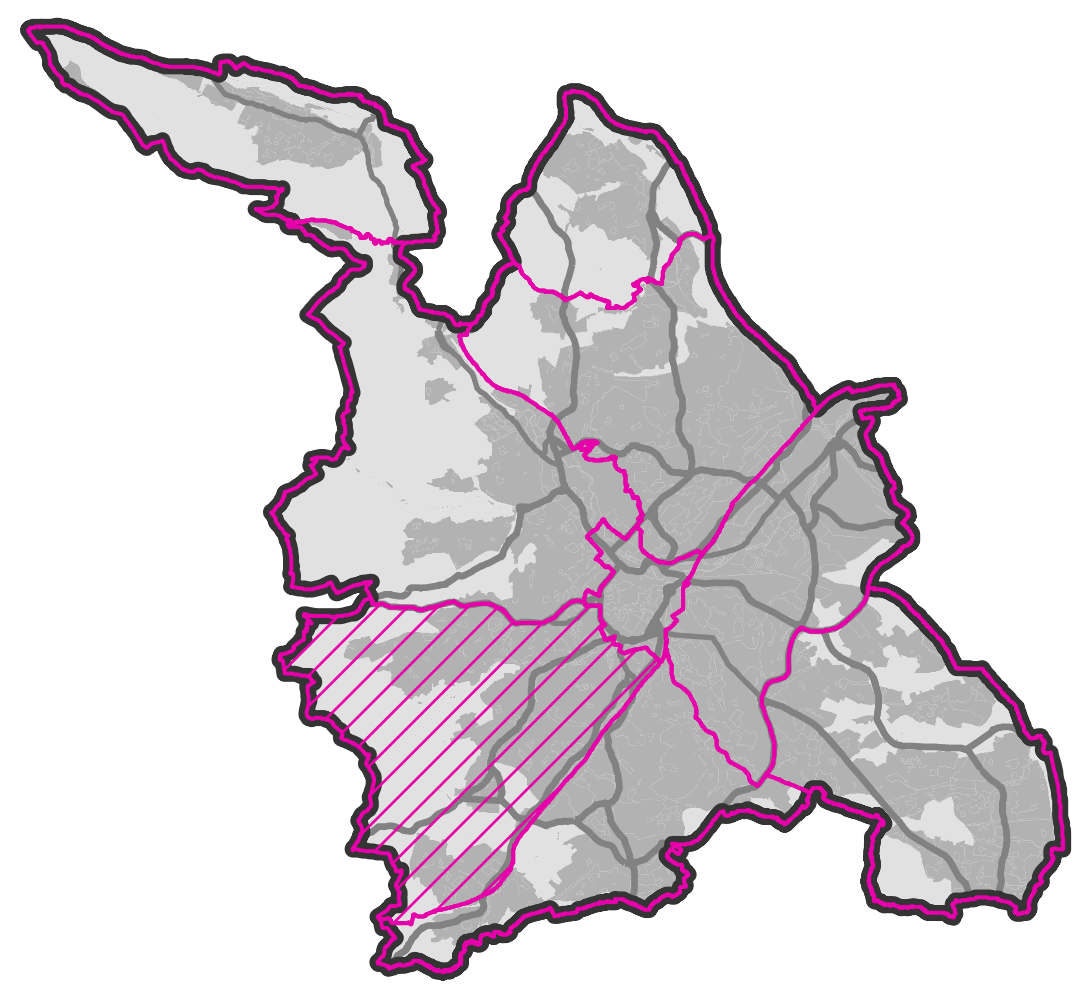
This page is intentionally left blank

# The Sheffield Plan

Publication (Pre-Submission) Draft  
Changes post Public Consultation

Policies Map  
July 2023

South West Sheffield Sub Area



## Site Allocations

- Strategic Housing Site
- Housing Site
- Strategic Employment Site
- Employment Site
- Strategic Mixed Use Site
- Mixed Use Site
- Strategic Leisure and Recreation Site
- Open Space Site

## Routes

- Strategic Road Network
- Strategic Route for Heavy Goods Vehicles
- Strategic Road
- Safeguarded Route for the Innovation Corridor
- Cycle route (existing)
- Connecting Sheffield
- Mass Transit Corridor
- Gateway Route
- Supertram stop
- Supertram route

## Policy Zones

- City Centre Office Zone
- General Employment Zone
- Industrial Zone
- Residential Zone
- City Centre Primary Shopping Area
- District Centre
- Local Centre
- Central Area Flexible Use Zone
- Flexible Use Zone (Outside the Central Area)
- Cultural Zone
- University/College Zone
- Hospital Zone
- Urban Green Space Zone
- Green Belt

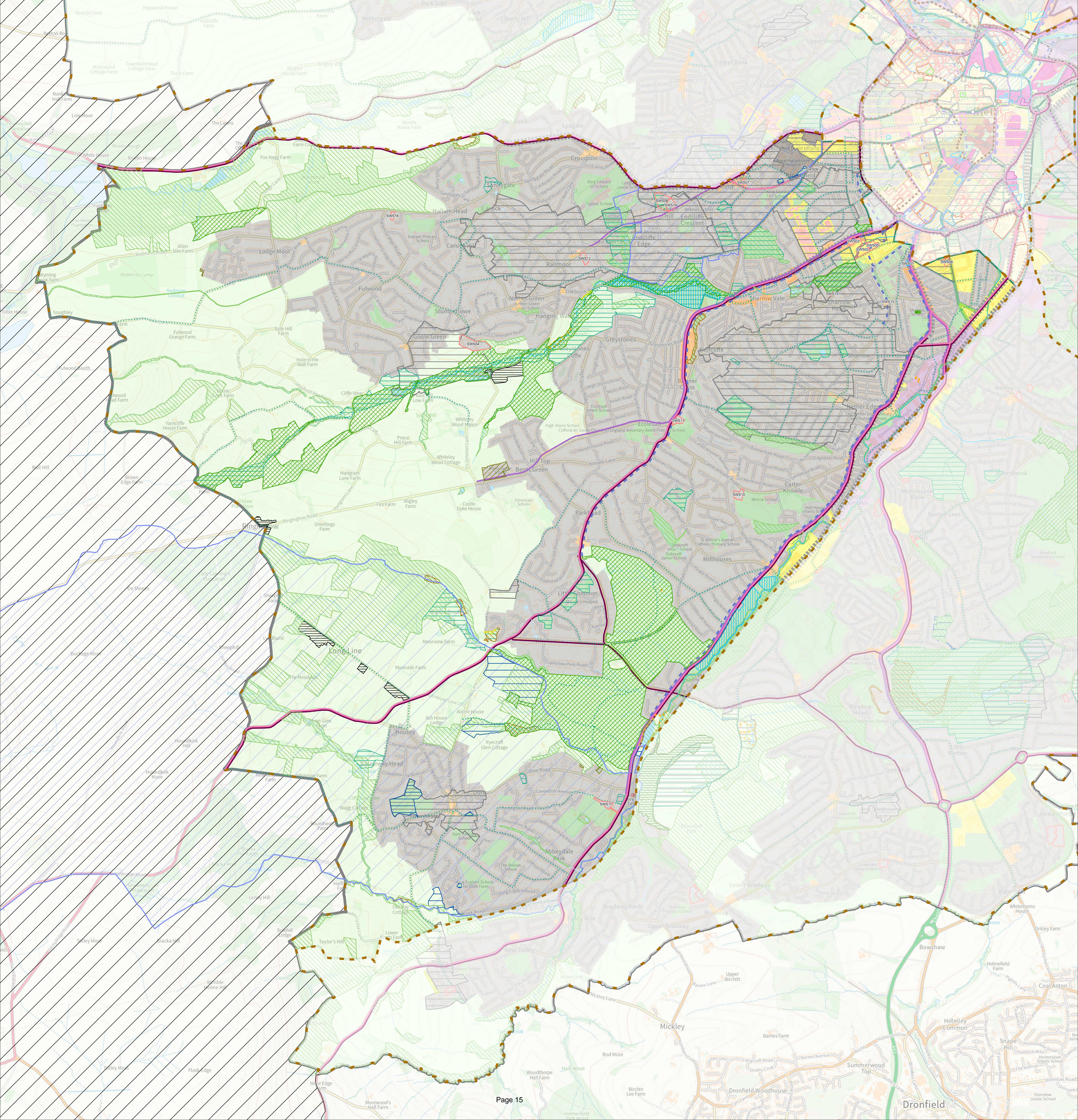
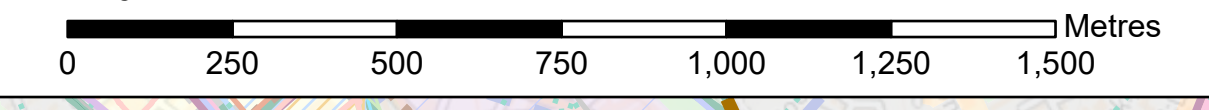
## Boundaries

- Central Area Neighbourhood
- City Centre
- Sub Area
- Designated Neighbourhood Plan Area
- Peak District National Park
- Sheffield Local Planning Authority

## Other designations

- Larger Wind Turbine Location
- Catalyst Site
- Priority Location
- Innovation District
- Olympic Legacy Park
- Biological Site of Special Scientific Interest
- Geological Site of Special Scientific Interest
- Local Nature Reserve
- Local Wildlife Site
- Local Geological Site
- Local Green Space
- Scheduled Monument
- Conservation Area
- Historic Park, Garden or Cemetery
- Green Belt Village or Substantially Developed Road Frontage
- Addition to the Green Belt
- Removal from the Green Belt
- Night-time Quiet Area
- Area suitable for Purpose Built Student Accommodation
- Safeguarded for Flood Storage
- Main river
- Waterway

© Crown copyright and database rights 2023 OS licence number 100018816. You are permitted to use this data solely to enable you to respond to, or interact with, the organisation that provided you with the data. You are not permitted to copy, sub-licence, distribute or sell any of this data to third parties in any form.



This page is intentionally left blank

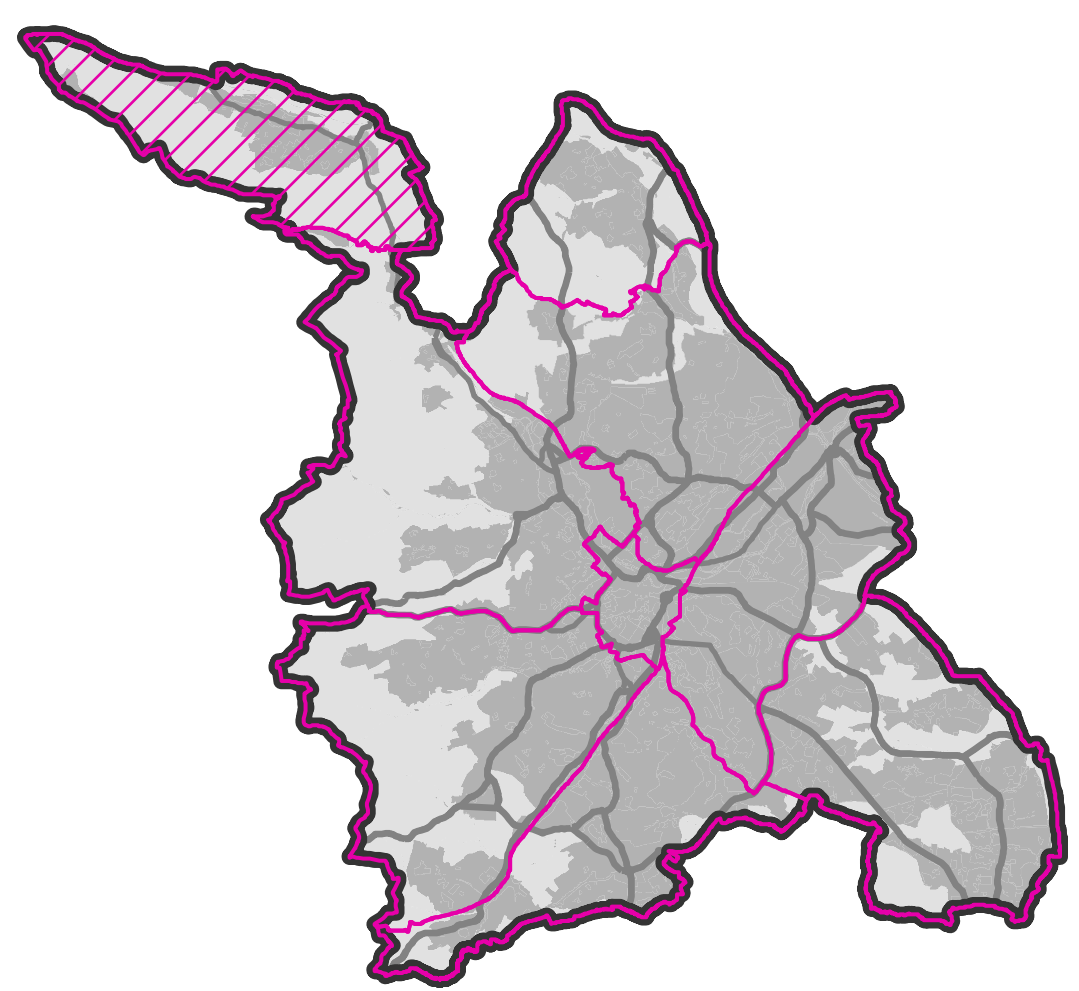


# Sheffield Plan

Publication (Pre-Submission) Draft  
Changes post Public Consultation

Policies Map  
July 2023

Stocksbridge/Deepcar Sub Area



### Site Allocations

- Strategic Housing Site
- Housing Site
- Strategic Employment Site
- Employment Site
- Strategic Mixed Use Site
- Mixed Use Site
- Strategic Leisure and Recreation Site
- Open Space Site

### Routes

- Strategic Road Network
- Strategic Route for Heavy Goods Vehicles
- Strategic Road
- Safeguarded Route for the Innovation Corridor
- Cycle route (existing)
- Connecting Sheffield
- Mass Transit Corridor
- Gateway Route
- Supertram stop
- Supertram route

### Policy Zones

- City Centre Office Zone
- General Employment Zone
- Industrial Zone
- Residential Zone
- City Centre Primary Shopping Area
- District Centre
- Local Centre
- Central Area Flexible Use Zone
- Flexible Use Zone (Outside the Central Area)
- Cultural Zone
- University/College Zone
- Hospital Zone
- Urban Green Space Zone
- Green Belt

### Boundaries

- Central Area Neighbourhood
- City Centre
- Sub Area
- Designated Neighbourhood Plan Area
- Peak District National Park
- Sheffield Local Planning Authority

### Other designations

- Larger Wind Turbine Location
- Catalyst Site
- Priority Location
- Innovation District
- Olympic Legacy Park
- Biological Site of Special Scientific Interest
- Geological Site of Special Scientific Interest
- Local Nature Reserve
- Local Wildlife Site
- Local Geological Site
- Local Green Space
- Scheduled Monument
- Conservation Area
- Historic Park, Garden or Cemetery
- Green Belt Village or Substantially Developed
- Road Frontage
- Addition to the Green Belt
- Removal from the Green Belt
- Night-time Quiet Area
- Area suitable for Purpose Built Student Accommodation
- Safeguarded for Flood Storage
- Main river
- Waterway



This page is intentionally left blank